

## Other ER Toolholders

- 1 Other Toolholders - Features | Benefits
- 2 MK | ER (Morse Taper)
- 3 ISO | ERM (Haas ISO 20)
- 4 SH | ER (Automotive Shank)
- 5 BT | WD (Weldon)
- 6 BT | KFD (Shell mill Face mill)
- 7 BT | KBF (Drill Chuck)
- 8 BT | MK (Morse Taper Adapter)
- 9 TC | WD (Weldon)
- 10 TC | KFD (Shell mill Face mill)
- 11 TC | KBF (Drill Chuck)
- 12 TC | MK (Morse Taper Adapter)



Swiss  
Precision  
Tools

# OTHER

Home

## Other Toolholders

Features | Benefits

### Swiss Quality

Made in Switzerland to ISO 9001/ISO 14001.

**1** **Marking**  
Type and part number (reduces selection error).

**2** **Traceability**  
Lot number marking on all products for traceability through the entire manufacturing process.

**3** **Original REGO-FIX®**  
Our extensive experience results in a well-engineered system. Original only with the REGO-FIX® quality seal  $\Delta$ . Guarantees the best quality.

**T.I.R. <0.0001" (3  $\mu$ m)**  
Inner diameter to outer diameter.

**Surface Finish max. Ra 0.25**  
Higher clamping force and higher transferable torque.

**Q+® Balancing**  
100% balanced to G 2.5 @ 22,000 rpm.

**Hi-Q® Balancing System**  
Ready to accept Hi-Q® balancing rings which allow to offset the imbalance introduced by the cutting tool up to 80,000 rpm.

**Hi-Q® Clamping Nut Included**  
Guarantees highest clamping force and best balancing.

**Vibration Dampening**  
For best machining results.





## MK/ER Toolholder

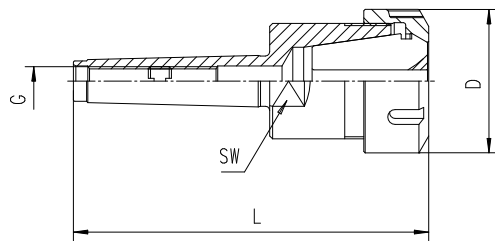
### Applications

Morse taper collets are designed for drawbar thread application. They can be used on milling or combined drilling-milling machines as well as on boring machines. For drilling machines we supply the corresponding tangs (ATL) on request.

### Morse Taper Colletholders

Type	Part No.	D [mm]	L [mm]	G	SW [mm]
MK 1 / ER 16 x 041	2701.11600	28	93.5	M6	17
MK 2 / ER 20 x 049	2702.12000	34	111.5	M10	22
MK 2 / ER 25 x 052	2702.12500	42	115	M10	24
MK 2 / ER 32 x 060	2702.13200	50	123	M10	36
MK 3 / ER 25 x 052	2703.12500	42	132	M12	24
MK 3 / ER 32 x 070	2703.13200	50	150	M12	24
MK 4 / ER 32 x 060	2704.13200	50	163	M16	32
MK 4 / ER 40 x 082	2704.14000	63	183	M16	32
MK 5 / ER 40 x 064	2705.14000	63	192	M20	45
MK 5 / ER 50 x 086	2705.15900	78	214	M20	45

Supplied with: Colletholder, clamping nut and back-up screw.



**!** We recommend tightening the clamping nuts with a torque wrench. The maximum torque shall not be more than 25% above the recommended tightening torque.

## ISO 20/ERM Toolholder

### Q+® Balancing

100% balanced to G 2.5 @ 40,000 rpm.

### Applications

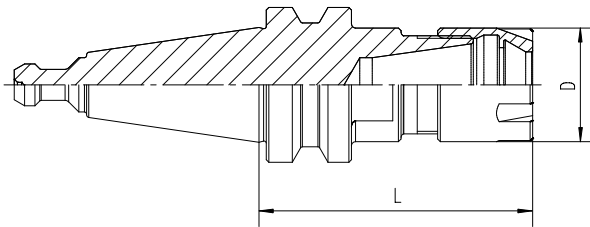
The REGO-FIX® ISO 20 toolholders are designed to work with the HAAS Office Mill. To utilize your machine to its full potential, use the REGO-FIX® brand of holders and collets to see the difference quality can make in your machining operations.

### ISO Colletholder

Type	Standard Part No.	D [mm]	L [mm]
ISO 20 / ERM 11 x 048 HAAS	2420.11116	16	46
ISO 20 / ERM 16 x 053 HAAS	2420.11616	22	53
ISO 20 / ERM 20 x 055 HAAS	2420.12016	28	55

Supplied: ISO colletholder with ERM clamping nut and integral pull stud.

Also Available in PG.



**!** We recommend tightening the clamping nuts with a torque wrench. The maximum torque shall not be more than 25% above the recommended tightening torque.

## SH/ER Toolholder

### Applications

Automotive shank colletholders with trapezoidal thread are supplied with a setting nut. With this type of colletholder, ER, ER-GB and ET1 REGO-FIX® collets can be used.

### Special Applications

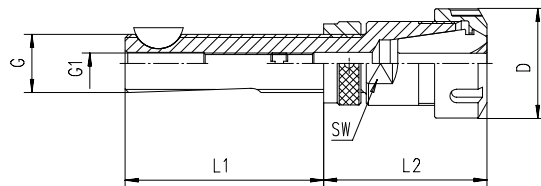
A quick-change setting nut according to system BILZ is available as an option. This option must be ordered separately and is supplied at extra charge. When extra high clamping force is needed, e.g. when tapping with ER-GB or ET1\*, we recommend the use of our friction bearing clamping nuts Hi-Q®/ERB and Hi-Q®/ERBC.

\*Not for coolant through tools and not for applications with sealing disks.

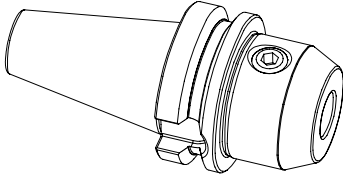
### Automotive Shank Colletholders

Type	Part No.	D [mm]	G	G1	L1 [mm]	L2 [mm]	SW [mm]
SH 12 x 050 / ER 11	2612.11104	19.0	Tr 12x1.5	M5	50.0	46.6	12
SH 16 x 073 / ER 16	2616.11604	28.0	Tr 16x1.5	M6	73.0	53.5	19
SH 20 x 076 / ER 20	2620.12004	34.0	Tr 20x2.0	M8	76.0	59.5	22
SH 28 x 083 / ER 25	2628.12504	42.0	Tr 28x2.0	M18x1.5	83.0	57.0	28

Supplied with: Colletholder, clamping nut, back-up screw, setting nut and Woodruff-key.



**!** We recommend tightening the clamping nuts with a torque wrench. The maximum torque shall not be more than 25% above the recommended tightening torque.

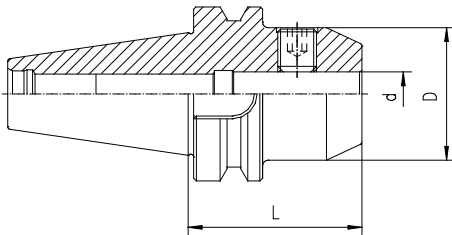
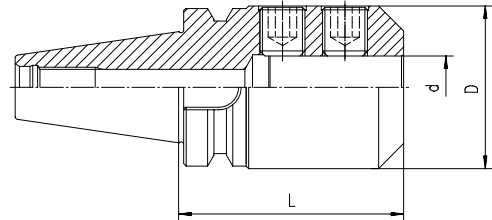


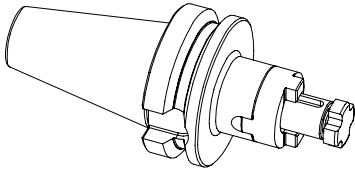
## End Mill Holders (WELDON)

Type	Form A Part No.	d [mm]	D1 [mm]	L [mm]	Drawing
BT 30 / WD 6 x 050	2130.30620	6	25	50	1
BT 30 / WD 8 x 050	2130.30820	8	28	50	1
BT 30 / WD 10 x 050	2130.31020	10	35	50	1
BT 30 / WD 12 x 050	2130.31220	12	42	50	1
BT 30 / WD 14 x 050	2130.31420	14	44	50	1
BT 30 / WD 16 x 063	2130.31630	16	48	63	1
BT 30 / WD 18 x 063	2130.31830	18	50	63	1
BT 30 / WD 20 x 063	2130.32030	20	52	63	1
BT 40 / WD 6 x 050	2140.30620	6	25	50	1
BT 40 / WD 8 x 050	2140.30820	8	28	50	1
BT 40 / WD 10 x 063	2140.31030	10	35	63	1
BT 40 / WD 12 x 063	2140.31230	12	42	63	1
BT 40 / WD 14 x 063	2140.31430	14	44	63	1
BT 40 / WD 16 x 063	2140.31630	16	48	63	1
BT 40 / WD 18 x 063	2140.31830	18	50	63	1
BT 40 / WD 20 x 063	2140.32030	20	52	63	1
BT 40 / WD 25 x 090	2140.32550	25	65	90	2
BT 40 / WD 32 x 100	2140.33260	32	72	100	2

Type	Form A Part No.	d [mm]	D1 [mm]	L [mm]	Drawing
BT 50 / WD 6 x 063	2150.30630	6	25	63	1
BT 50 / WD 8 x 063	2150.30830	8	28	63	1
BT 50 / WD 10 x 063	2150.31030	10	35	63	1
BT 50 / WD 12 x 080	2150.31250	12	42	80	1
BT 50 / WD 14 x 080	2150.31450	14	44	80	1
BT 50 / WD 16 x 080	2150.31650	16	48	80	1
BT 50 / WD 18 x 080	2150.31850	18	50	80	1
BT 50 / WD 20 x 080	2150.32050	20	52	80	1
BT 50 / WD 25 x 100	2150.32560	25	65	100	2
BT 50 / WD 32 x 105	2150.33260	32	72	105	2
BT 50 / WD 40 x 110	2150.34060	40	90	110	2

Supplied with: End mill holder and lock screw.

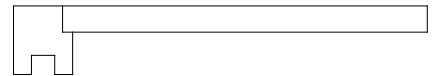
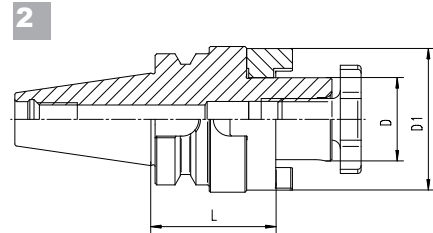
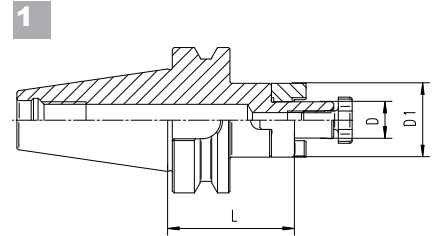
**1**

**2**




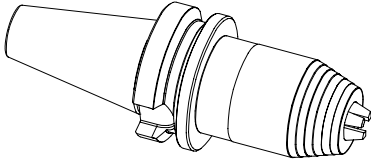
### Universal Shell Mill | Face Mill Holders | Matching Spanners

Type	Form A Part No.	D [mm]	D1 [mm]	L [mm]	Drawing
BT 30 / KFD 16 x 045	2130.41620	16	32	45	1
BT 30 / KFD 22 x 047	2130.42220	22	40	47	1
BT 30 / KFD 27 x 049	2130.42720	27	48	49	2
BT 30 / KFD 32 x 053	2130.43230	32	58	53	2
BT 40 / KFD 16 x 055	2140.41630	16	32	55	1
BT 40 / KFD 22 x 055	2140.42230	22	40	55	1
BT 40 / KFD 27 x 055	2140.42730	27	48	55	1
BT 40 / KFD 32 x 060	2140.43240	32	58	60	1
BT 40 / KFD 40 x 060	2140.44040	40	70	60	2
BT 50 / KFD 16 x 070	2150.41630	16	32	70	1
BT 50 / KFD 22 x 070	2150.42230	22	40	70	1
BT 50 / KFD 27 x 070	2150.42750	27	48	70	1
BT 50 / KFD 32 x 070	2150.43250	32	58	70	1
BT 50 / KFD 40 x 070	2150.44050	40	70	70	1
BT 50 / KFD 50 x 070	2150.45050	50	90	70	1

Supplied with: Universal shell mill/face mill holder, lock screw, feather key and drive ring.



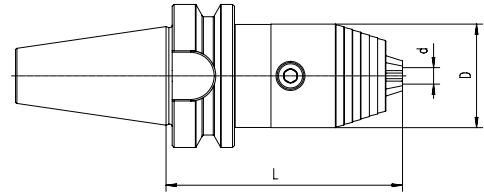
Matching Spanners Type	Part No.
FDS 16	7711.16000
FDS 22	7711.22000
FDS 27	7711.27000
FDS 32	7711.32000
FDS 40	7711.40000
FDS 50	7711.50000



### Drill Chucks

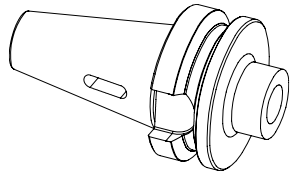
Type	Form A Part No.	Form AD+B Part No.	d [mm]	D [mm]	L [mm]
BT 30 / KBF 1-13 mm	2130.50100	-	1-13	50	95
BT 40 / KBF 1-13 mm	-	2140.50103	1-13	50	98
BT 50 / KBF 1-13 mm	-	2150.50103	1-13	50	100

Supplied with: Drill chuck and allen-key.



Clamping range	1-13 mm
Maximum runout difference	0.03 mm
Maximum tightening torque	20 Nm
Clamping force (@ 20 Nm tightening torque)	80 Nm
Maximum rpm	up to 35,000 rpm

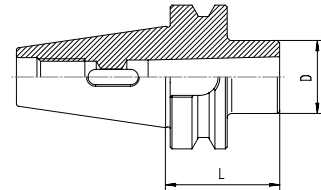


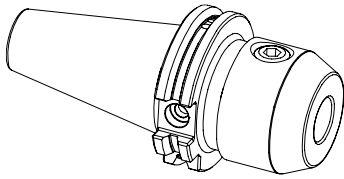


## Morse Taper Holder

Type	Form A+AD Part No.	D [mm]	L [mm]
BT 40 / MK 1 x 050	2140.80110	25	50
BT 40 / MK 2 x 050	2140.80210	32	50
BT 40 / MK 3 x 070	2140.80320	40	70
BT 40 / MK 4 x 095	2140.80430	48	95

Supplied with: Morse taper holder.

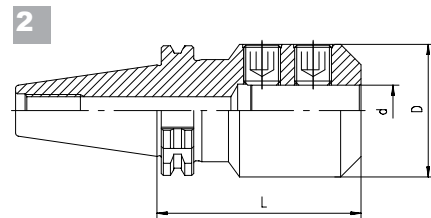
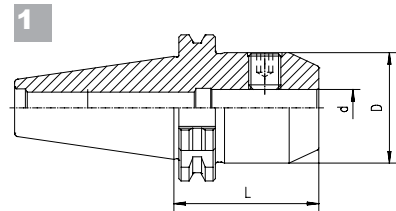


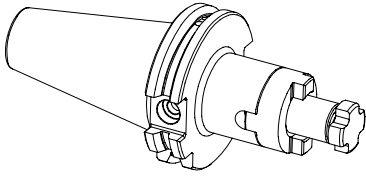


## End Mill Holders (WELDON)

Type	Form A+AD Part No.	d [mm]	D [mm]	L [mm]	Drawing
TC 40 / WD 6 x 050	2240.30620	6	25	50	1
TC 40 / WD 8 x 050	2240.30820	8	28	50	1
TC 40 / WD 10 x 050	2240.31020	10	35	50	1
TC 40 / WD 12 x 050	2240.31220	12	42	50	1
TC 40 / WD 14 x 050	2240.31420	14	44	50	1
TC 40 / WD 16 x 063	2240.31630	16	48	63	1
TC 40 / WD 18 x 063	2240.31830	18	50	63	1
TC 40 / WD 20 x 063	2240.32030	20	52	63	1
TC 40 / WD 25 x 100	2240.32560	25	65	100	2
TC 40 / WD 32 x 100	2240.33260	32	72	100	2
TC 50 / WD 6 x 063	2250.30630	6	25	63	1
TC 50 / WD 8 x 063	2250.30830	8	28	63	1
TC 50 / WD 10 x 063	2250.31030	10	35	63	1
TC 50 / WD 12 x 063	2250.31230	12	42	63	1
TC 50 / WD 14 x 063	2250.31430	14	44	63	1
TC 50 / WD 16 x 063	2250.31630	16	48	63	1
TC 50 / WD 18 x 063	2250.31830	18	50	63	1
TC 50 / WD 20 x 063	2250.32030	20	52	63	1
TC 50 / WD 25 x 080	2250.32550	25	65	80	2
TC 50 / WD 32 x 100	2250.33260	32	72	100	2
TC 50 / WD 40 x 100	2250.34060	40	80	100	2

Supplied with: End mill holder and lock screw.

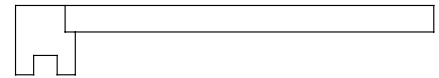
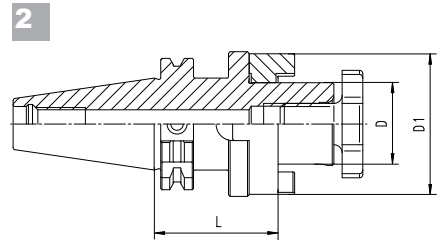
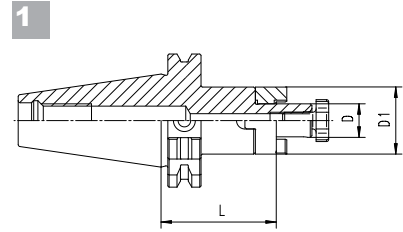




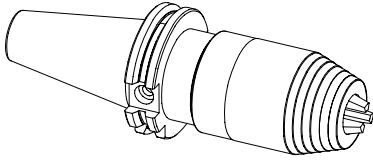
### Universal Shell Mill | Face Mill Holders | Matching Spanners

Type	Form A Part No.	D [mm]	D1 [mm]	L [mm]	Drawing
TC 40 / KFD 16 x 055	2240.41630	16	32	55	1
TC 40 / KFD 22 x 055	2240.42230	22	40	55	1
TC 40 / KFD 27 x 055	2240.42730	27	48	55	1
TC 40 / KFD 32 x 060	2240.43240	32	58	60	2
TC 40 / KFD 40 x 060	2240.44040	40	70	60	2
TC 50 / KFD 16 x 055	2250.41630	16	32	55	1
TC 50 / KFD 22 x 055	2250.42230	22	40	55	1
TC 50 / KFD 27 x 055	2250.42730	27	48	55	1
TC 50 / KFD 32 x 055	2250.43230	32	58	55	1
TC 50 / KFD 40 x 055	2250.44030	40	70	55	1
TC 50 / KFD 50 x 070	2250.45050	50	90	70	2

Supplied with: Universal shell mill/face mill holder, lock screw, feather key and drive ring.



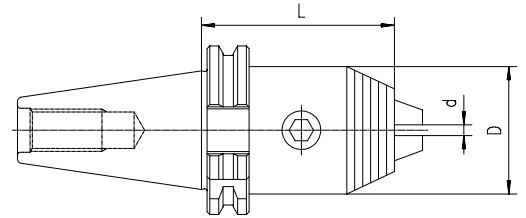
Matching Spanners Type	Part No.
FDS 16	7711.16000
FDS 22	7711.22000
FDS 27	7711.27000
FDS 32	7711.32000
FDS 40	7711.40000
FDS 50	7711.50000



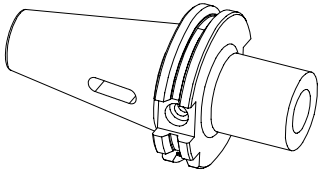
### Drill Chucks

Type	Form A Part No.	Form AD+B Part No.	d [mm]	D [mm]	L [mm]
TC 30 / KBF 1-13 mm	2230.50100	-	1-13	50	111
TC 40 / KBF 1-13 mm	-	2240.50103	1-13	50	90
TC 50 / KBF 1-13 mm	-	2250.50103	1-13	50	106

Supplied with: Drill chuck and allen-key.



Clamping range	1-13 mm
Maximum runout difference	0.03 mm
Maximum tightening torque	20 Nm
Clamping force (@ 20 Nm tightening torque)	80 Nm
Maximum rpm	up to 35,000 rpm



## Morse Taper Holder

Type	Form A+AD Part No.	D [mm]	L [mm]
TC 40 / MK 1 x 050	2240.80110	25	50
TC 40 / MK 2 x 050	2240.80210	32	50
TC 40 / MK 3 x 070	2240.80320	40	70
TC 40 / MK 4 x 095	2240.80430	48	95

Supplied with: Morse taper holder.

