

- 1 Cylindrical Holders - Features | Benefits**
- 2 Information**
- 3 CYL | ER**
- 4 CYL | ER M (Mini Nut)**
- 5 CYL | ER MF (Mini Nut w/Flat)**
- 6 CYD | ER MF (Double Sided Mini Nut w/Flat)**
- 7 CYL | ER NC (Lathe Standard Nut w/Flat)**
- 8 Swiss Quick - ERM/ERM | ER/ERM**
- 9 CYL SSY/ERC Softsyncro Tapping Holder**
- 10 CYL GSF/ERC Length Comp. Tapping Holder**
- 11 Floating Chuck - Features | Benefits**
- 12 Information**
- 13 PH | ER (Floating Holder Non-Coolant)**
- 14 MPH | ER M (Mini Non-Coolant Floating Holder)**
- 15 PHC | ER (Coolant Through Floating Holder)**
- 16 PHC | ER REGO-FIX CAPTO (Floating Holder)**



Swiss
Precision
Tools

Home

ER



Cylindrical Holders

Features | Benefits

Swiss Quality

Made in Switzerland to ISO 9001/ISO 14001.

1 **Marking**
Type and part number.

2 **Traceability**
Lot number marking on all products for traceability through the entire manufacturing process.

3 **Original REGO-FIX®**
Our extensive experience results in a well-engineered system. Original only with the REGO-FIX® quality seal \triangle . Guarantees the best quality.

Sizes

ER 8 – ER 40

Types

With flat or double ended collets.

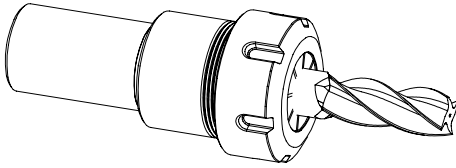
T.I.R. < 0.0001" (3 μ m)

Inner diameter to outer diameter.

Surface Finish max. Ra 0.25

Higher clamping force and higher transferable torque.





CYL/ER Toolholders

Applications

Cylindrical REGO-FIX® colletholders are designed to be used in Swiss Automatic machines, lathes and as extensions. They are available in different types. These holders accept ER, ER-UP, ER-GB and ET1 type collets.

CYL/ER

This type of holder is available with different shanks lengths. The shorter lengths are most commonly used on turret lathes where a short projection is often desired.

CYL/ER M

These holders are well suited for Swiss Automatic machines where a small diameter nut is required. All of these holders feature the Hi-Q® mini-nut for minimal outside diameter and improved clamping forces.

The CYL/ERM holders include a through hole so tools can be accurately preset to the same length.

CYL/ER MF

These collet holders are designed with a clamping flat along the shank to be used in Swiss Automatic machines.

CYD/ER MF

These collets holders are designed with a double ER collet cavity. They are made to work in machines that offer the possibility of utilizing two cutting tool in the same holder.

CYL/ER NC

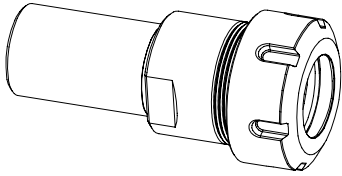
These colletholders are particularly suitable on CNC turning machines, but can be used on conventional turning machines as well.

CYL SSY/ERC

Softsynchro® tapping holders are designed to compensate pitch differences between synchronous spindles and tapping tools.

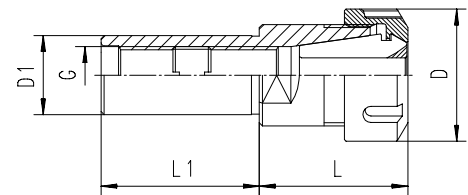
CYL GSF/ERC

Tapping holders with length compensation in compression and tension directions are used on machines without synchronization of spindle feed and the pitch of the thread.

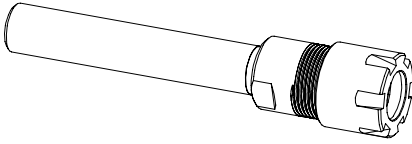


Toolholders Straight Shank with Standard Hi-Q Nut

Type	Part No.	D [mm]	D1 h6	L [mm]	L1 [mm]	G [mm]	Wrenches
Inch Diameter							
CYL 1/2" x 070 / ER 11	2613.11141	19	1/2"	28.5	70	M6	7112.11010
CYL 1/2" x 100 / ER 16	2613.11661	28	1/2"	36.0	100	M6	7112.16010
CYL 1/2" x 100 / ER 20	2613.12061	34	1/2"	44.5	100	M6	7112.20010
CYL 5/8" x 060 / ER 16	2616.11631	28	5/8"	36.5	60	M 8x1	7112.16010
CYL 5/8" x 100 / ER 20	2616.12061	34	5/8"	44.5	100	M 8x1	7112.20010
CYL 3/4" x 050 / ER 16	2619.11621	28	3/4"	30.5	50	M 12x1	7112.16010
CYL 3/4" x 100 / ER 16	2619.11661	28	3/4"	30.5	100	M 12x1	7112.16010
CYL 3/4" x 060 / ER 20	2619.12031	34	3/4"	36.5	60	M 12x1	7112.20010
CYL 3/4" x 050 / ER 25	2619.12521	42	3/4"	47.0	50	M 12x1	7111.25000
CYL 1" x 100 / ER 20	2625.12061	34	1"	39.5	100	M 18x1.5	7112.20010
CYL 1" x 050 / ER 25	2625.12521	42	1"	47.0	50	M 18x1.5	7111.25000
CYL 1" x 100 / ER 25	2625.12561	42	1"	47.0	100	M 18x1.5	7111.25000
CYL 1" x 050 / ER 32	2625.13221	50	1"	53.0	50	M 18x1.5	7111.32000
CYL 1" x 050 / ER 40	2625.14021	63	1"	60.0	50	M 18x1.5	7111.40000
CYL 1 1/4" x 060 / ER 32	2632.13231	50	1 1/4"	53.0	60	M 22x1.5	7111.32000
Metric Diameter							
CYL 14 x 060 / ER 16	2614.11630	28	14	36.5	60	M6	7112.16010
CYL 16 x 060 / ER 16	2616.11630	28	16	36.5	60	M 8x1	7112.16010
CYL 20 x 050 / ER 16	2620.11620	28	20	30.5	50	M 12x1	7112.16010
CYL 20 x 100 / ER 16	2620.11660	28	20	30.5	100	M 12x1	7112.16010
CYL 20 x 030 / ER 20	2620.12010	34	20	36.5	30	M 12x1	7112.20010
CYL 20 x 060 / ER 20	2620.12030	34	20	36.5	60	M 12x1	7112.20010
CYL 20 x 050 / ER 25	2620.12520	42	20	47.0	50	M 12x1	7111.25000
CYL 20 x 100 / ER 25	2620.12560	42	20	47.0	100	M 12x1	7111.25000
CYL 20 x 050 / ER 32	2620.13220	50	20	54.0	50	M 12x1	7111.32000
CYL 20 x 100 / ER 32	2620.13260	50	20	54.0	100	M 12x1	7111.32000
CYL 22 x 100 / ER 25	8020.22000	42	22	47.0	100	M 12x1	7111.25000
CYL 25 x 050 / ER 25	2625.12520	42	25	47.0	50	M 18x1.5	7111.25000
CYL 25 x 100 / ER 25	2625.12560	42	25	47.0	100	M 18x1.5	7111.25000
CYL 25 x 050 / ER 32	2625.13220	50	25	54.0	50	M 18x1.5	7111.32000
CYL 25 x 050 / ER 40	2625.14020	63	25	60.0	50	M 18x1.5	7111.40000
CYL 30 x 050 / ER 25	2630.12520	42	30	42.0	50	M 18x1.5	7111.25000
CYL 30 x 050 / ER 32	2630.13220	50	30	53.0	50	M 22x1.5	7111.32000

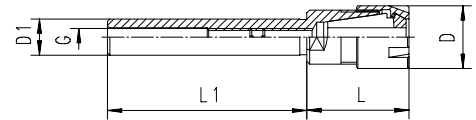


Supplied with Hi-Q® clamping nut and back-up screw.

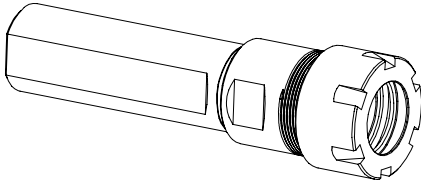


Toolholders Straight Shank with Mini-Style Hi-Q Nut

Type	Part No.	D [mm]	D1 h6	L [mm]	L1 [mm]	G [mm]	Wrenches
Inch Diameter							
CYL 3/8" x 070 / ER 8 M	2609.20841	12	9.52	23.0	70	M 5	7113.08000
CYL 1/2" x 140 / ER 11 M	2613.21191	16	12.7	29.5	140	M 6	7113.11000
CYL 1/2" x 140 / ER 16 M	2613.21691	22	12.7	37.0	140	M 6	7113.16000
CYL 5/8" x 150 / ER 11 M	2616.21191	16	15.87	22.5	150	M 8x1	7113.11000
CYL 3/4" x 155 / ER 16 M	2619.21691	22	19.05	26.5	155	M 12x1	7113.16000
CYL 3/4" x 100 / ER 25 M	2619.22561	35	19.05	47.0	100	M 12x1	7113.25000
CYL 1" x 155 / ER 20 M	2625.22091	28	25.5	26.5	155	M 14x1	7113.20000
Metric Diameter							
CYL 06 x 045 / ER 11 M	2606.21120	16	6	26.5	45	3	7113.11000
CYL 07 x 045 / ER 11 M	2607.21120	16	7	26.5	45	3	7113.11000
CYL 08 x 080 / ER 8 M	2608.20850	12	8	26.0	80	3	7113.08000
CYL 08 x 056 / ER 11 M	2608.21130	16	8	26.5	56	4	7113.11000
CYL 10 x 060 / ER 16 M	2610.21630	22	10	38.5	60	4	7113.16000
CYL 12 x 080 / ER 8 M	2612.20850	12	12	17.0	80	4	7113.08000
CYL 12 x 080 / ER 16 M	2612.21650	22	12	38.5	80	4	7113.16000
CYL 15 x 100 / ER 20 M	2615.22060	28	15	42.5	100	7	7113.20000
CYL 16 x 150 / ER 11 M	2616.21190	16	16	21.0	150	M 8x1	7113.11000
CYL 16 x 100 / ER 20 M	2616.22060	28	16	42.5	100	7	7113.20000
CYL 20 x 155 / ER 16 M	2620.21690	22	20	26.5	155	M 12x1	7113.16000
CYL 25 x 155 / ER 20 M	2625.22090	28	25	26.5	155	M 14x1	7113.20000

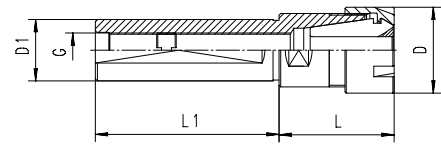


Supplied with Hi-Q® clamping nut and back-up screw.

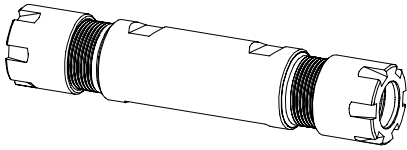


Toolholders Straight Shank with Flat and Mini-Style Hi-Q Nut

Type	Part No.	D [mm]	D1 h6	L [mm]	L1 [mm]	G [mm]	Wrenches
Inch Diameter							
CYL 5/8" x 043 / ER 8 MF	2616.20811	12	5/8"	15	43	M5	7113.08000
CYL 3/4" x 115 / ER 11 MF	2619.21173	16	3/4"	20	115	M 8x1	7113.11000
CYL 3/4" x 038 / ER 16 MF	2619.21613	22	3/4"	28	38	M 12x1	7113.16000
CYL 3/4" x 050 / ER 16 MF	2619.21623	22	3/4"	28	50	M 12x1	7113.16000
CYL 3/4" x 070 / ER 16 MF	2619.21643	22	3/4"	28	70	M 12x1	7113.16000
CYL 3/4" x 120 / ER 16 MF	2619.21683	22	3/4"	28	120	M 12x1	7113.16000
CYL 3/4" x 140 / ER 16 MF	2619.21693	22	3/4"	28	140	M 12x1	7113.16000
CYL 1" x 033 / ER 16 MF	2625.21613	22	1"	28	33	M 12x1	7113.16000
CYL 1" x 065 / ER 16 MF	2625.21643	22	1"	28	65	M 12x1	7113.16000
CYL 1" x 075 / ER 16 MF	2625.21653	22	1"	28	75	M 12x1	7113.16000
CYL 1" x 100 / ER 16 MF	2625.21663	22	1"	28	100	M 12x1	7113.16000
CYL 1" x 100 / ER 20 MF	2625.22063	28	1"	28	100	M 14x1	7113.20000
CYL 1" x 140 / ER 20 MF	2625.22093	28	1"	28	140	M 14x1	7113.20000
Metric Diameter							
CYL 16 x 038 / ER 11 MF	2616.21112	16	16	20	38	M 8x1	7113.11000
CYL 16 x 140 / ER 11 MF	2616.21122	16	16	60	140	M 8x1	7113.11000
CYL 16 x 035 / ER 16 MF	2616.21612	22	16	38	35	M 8x1	7113.16000
CYL 20 x 050 / ER 16 MF	2620.21622	22	20	28	50	M 12x1	7113.16000
CYL 20 x 070 / ER 16 MF	2620.21642	22	20	28	70	M 12x1	7113.16000
CYL 20 x 060 / ER 11 MF	2620.21132	16	20	20	60	M 8x1	7113.11000
CYL 20 x 120 / ER 16 MF	2620.21682	22	20	28	120	M 12x1	7113.16000
CYL 20 x 140 / ER 16 MF	2620.21692	22	20	8	140	M 12x1	7113.16000
CYL 22 x 038 / ER 16 MF	2622.21612	22	22	28	38	M 12x1	7113.16000
CYL 22 x 070 / ER 16 MF	2622.21642	22	22	28	70	M 12x1	7113.16000
CYL 22 x 100 / ER 16 MF	2622.21662	22	22	28	100	M 12x1	7113.16000
CYL 22 x 080 / ER 20 MF	2622.22052	28	22	39	80	M 12x1	7113.20000
CYL 22 x 070 / ER 25 MF	2622.22542	35	22	47	70	M 12x1	7113.25000
CYL 25 x 065 / ER 16 MF	2625.21642	22	25	28	65	M 12x1	7113.16000
CYL 25 x 100 / ER 20 MF	2625.22062	28	25	28	100	M 14x1	7113.20000
CYL 25 x 154 / ER 20 MF	2625.22002	28	25	28	154	M 14x1	7113.20000
CYL 25 x 075 / ER 25 MF	2625.22552	35	25	47	75	M 14x1	7113.25000
CYL 25 x 145 / ER 25 MF	2625.22592	35	25	36	145	M 14x1	7113.25000
CYL 32 x 070 / ER 25 MF	2632.22542	35	32	30	70	M 18x1.5	7113.25000

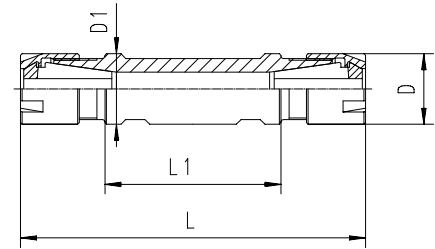


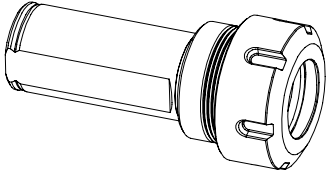
Supplied with Hi-Q® clamping nut and back-up screw.



Toolholders Double Ended Straight Shank with Flat and Mini-Style Hi-Q Nut

Type	Part No.	D [mm]	D1 h6	L [mm]	L1 [mm]	Wrenches
Inch Diameter						
CYD 5/8" x 015 / ER 8 MF	2616.20805	12	5/8"	45	15	7113.08000
CYD 5/8" x 025 / ER 8 MF	2616.20895	12	5/8"	55	25	7113.08000
CYD 3/4" x 040 / ER 11 MF	2619.21125	16	3/4"	80	40	7113.11000
CYD 3/4" x 070 / ER 11 MF	2619.21145	16	3/4"	110	70	7113.11000
CYD 3/4" x 090 / ER 11 MF	2619.21165	16	3/4"	130	90	7113.11000
CYD 3/4" x 055 / ER 16 MF	2619.21635	22	3/4"	107	55	7113.16000
CYD 1" x 030 / ER 16 MF	2625.21615	22	1"	85	30	7113.16000
CYD 1" x 062 / ER 16 MF	2625.21635	22	1"	118	62	7113.16000
Metric Diameter						
CYD 16 x 040 / ER 11 MF	2616.21114	16	16	79	40	7113.11000
CYD 16 x 050 / ER 11 MF	2616.21124	16	16	90	50	7113.11000
CYD 20 x 030 / ER 11 MF	2620.21114	16	20	70	30	7113.11000
CYD 20 x 050 / ER 11 MF	2620.21124	16	20	90	50	7113.11000
CYD 20 x 055 / ER 16 MF	2620.21634	22	20	107	55	7113.16000
CYD 22 x 055 / ER 16 MF	2622.21634	22	22	111	55	7113.16000
CYD 22 x 075 / ER 16 MF	2622.21654	22	22	131	75	7113.16000
CYD 25 x 062 / ER 16 MF	2625.21634	22	25	117	62	7113.16000
CYD 32 x 055 / ER 20 MF	2632.22034	28	32	111	55	7113.20000
CYD 32 x 075 / ER 20 MF	2632.22054	28	32	131	75	7113.20000

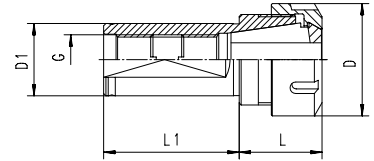




Toolholders Straight Shank with Flat and Standard Hi-Q Nut

Type	Part. No.	D [mm]	D1 h6	L [mm]	L1 [mm]	G [mm]	Wrenches
Inch Diameter							
CYL 1" x 100 / ER 20 NC	2625.12063	28	1"	24	100	M14 x 1	7112.20010
CYL 1 1/4" x 060 / ER 25 NC	2632.12533	42	1 1/4"	32	60	M18 x 1.5	7111.25000
CYL 1 1/4" x 060 / ER 32 NC	2632.13233	50	1 1/4"	38	60	M22 x 1.5	7111.32000
CYL 1 1/4" x 060 / ER 40 NC	2632.14033	63	1 1/4"	60	60	M22 x 1.5	7111.40000
CYL 1 1/2" x 075 / ER 40 NC	2638.14053	63	1 1/2"	55	75	M22 x 1.5	7111.40000
CYL 1 1/2" x 080 / ER 32 NC	2638.13253	50	1 1/2"	33	80	M22 x 1.5	7111.32000
Metric Diameter							
CYL 32 x 060 / ER 25 NC	2632.12532	42	32	32	60	M 18 x 1.5	7111.25000
CYL 32 x 060 / ER 32 NC	2632.13232	50	32	38	60	M 22 x 1.5	7111.32000
CYL 40 x 075 / ER 40 NC	2640.14052	63	40	55	75	M 22 x 1.5	7111.40000
CYL 40 x 080 / ER 32 NC	2640.13252	50	40	33	80	M 22 x 1.5	7111.32000

Supplied with Hi-Q® clamping nut and back-up screw.





Swiss Quality

Made in Switzerland to ISO 9001/ISO 14001.

Marking

Type and part number.

Traceability

Lot number marking on all products for traceability through the entire manufacturing process.

Original REGO-FIX®

Our extensive experience results in a well-engineered system. Original only with the REGO-FIX® quality seal Δ . Guarantee for best quality.

Sizes

ER 8 – ER 25

Types

With flat or double ended colletholders.

T.I.R. <0.0001" (3 μ m)

Inner diameter to outer diameter.

Surface Finish max. Ra 0.25

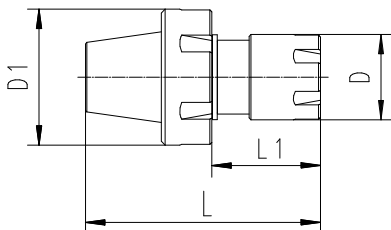
Higher clamping force and higher transferable torque.

SwissQuick® Collet Reductions

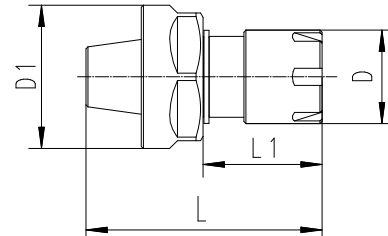
Type	Part No.	L [mm]	L1 [mm]	D [mm]	D1 [mm]	Wrenches
Mini-Nut Reductions						
ER 11 M/ ER 8 M	7161.11080	33	16.5	12	16	7113.11000 / 7113.08000
ER 16 M/ ER 11 M	7161.16110	42.5	18.5	16	23	7113.16000 / 7113.11000
ER 20 M/ ER 16 M	7161.20160	55.5	28	22	28	7113.20000 / 7113.16000
ER 25 M/ ER 11 M	7161.25110	54.5	22	16	35	7113.25000 / 7113.11000
ER 25 M/ ER 16 M	7161.25160	60.5	28	22	35	7113.25000 / 7113.16000
ER 25 M/ ER 20 M	7161.25200	60.5	28	28	35	7113.25000 / 7113.20000
Standard Nut Reductions						
ER 11 / ER 8 M	7162.11080	33	16.5	12	19	7112.11010 / 7113.08000
ER 16 / ER 11 M	7162.16110	42.5	18.5	16	28	7112.16100 / 7113.11000
ER 20 / ER 11 M	7162.20110	42	16.5	16	34	7112.20010 / 7113.11000
ER 20 / ER 16 M	7162.20160	55.5	28	22	34	7112.20010 / 7113.16000
ER 25 / ER 11 M	7162.25110	54.5	16.5	16	42	7111.25000 / 7113.11000
ER 25 / ER 16 M	7162.25160	60.5	28	22	42	7111.25000 / 7113.16000
ER 25 / ER 20 M	7162.25200	60.5	28	28	42	7111.25000 / 7113.25000
ER 32 / ER 16 M	7060.32160	56	29.5	28	50	7111.32000 / 7113.16000
ER 32 / ER 20 M	7060.32200	69.5	32.5	34	50	7111.32000 / 7113.20000

Available in PG Please Call 800-999-7346 or E-mail sales@rego-fix.com for Availability

Type ERM/ERM
with Mini-Thread



Type ER/ERM
with Standard-Thread



Non-Synchronous Tapping Holder

Features | Benefits

Quality

Made to ISO 9001/ISO 14001 standards.

1 Marking

Type and part number.

2 Traceability

Lot number marking on all products for traceability through the entire manufacturing process.

3 Quality Seal

The REGO-FIX® seal \triangle marked on the products guarantees for best quality.

T.I.R.

Best concentricity values – equal to rigid toolholders.

Length Compensation

In compression and tension directions.

Pressure-point Mechanism

Guarantees proper start of thread cutting/forming.

Secure Clamping

Secure clamping of the tap/cold forming tap by ER-GB collets with internal square.

For Coolant Through Tools

Up to 725 psi (50 bar) coolant pressure.

Process Reliability

Increases process reliability of non-synchronous thread manufacturing.

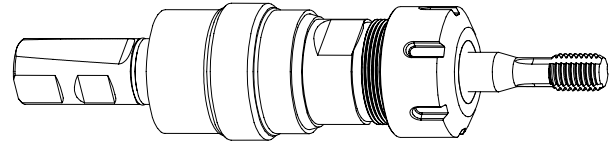


CYL GSF/ERC Tapping Holder with Length Compensation

Applications

REGO-FIX® tapping holders with length compensation are used on machines without synchronization of spindle feed and the pitch of the thread. These machines require tapping holders with compression and tension compensation to compensate for the difference in spindle feed and thread pitch.

REGO-FIX® tapping holders with length compensation feature a pressure-point mechanism. This guarantees the proper start of the thread cutting or forming and also allows to produce reproducible thread depth. A special design allows to feed coolant up to 725 psi (50 bar) to the tap without affecting the function of the length compensation. The compact design and the short extension allow a very flexible use of REGO-FIX® tapping holders.

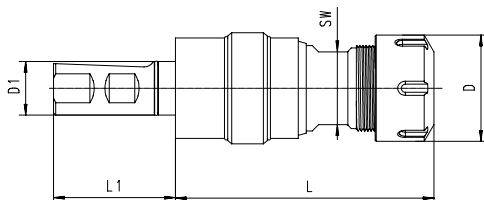


CYL GSF/ERC Tapping Holders with Length Compensation

Type	Part No.	D [mm]	D1 [mm]	L [mm]	L1 [mm]	Com- pression [mm]	Tension [mm]	SW [mm]
CYL 25 GSF / ERMC 20	2625.62001	28	25	85	57	5.0	7.5	24
CYL 25 GSF / ERC 32	2625.63201	50	25	115	57	7.0	10.0	34

Supplied: Tapping holder with Hi-Q®/ERC clamping nut.

For adapting the tapping holders to different steep tapers, please use the appropriate WELDON toolholders.



Floating Chuck

Features | Benefits

Swiss Quality

Made in Switzerland to ISO 9001/ISO 14001.


1 Marking

Type and part number.

2 Traceability

Lot number marking on all products for traceability through the entire manufacturing process.

3 Original REGO-FIX®

Our extensive experience results in a well-engineered system. Original only with the REGO-FIX® quality seal . Guarantee for best quality.

Adjustable Floating Resistance

Continuously adjustable between auto-centering and free floating. No restriction of the floating movement.

Adjustment for Tool Weight

Optimal setup by adjustment of floating resistance.

Vertical and Horizontal Application

Adjustable self-centering keeps the tool at the center of the floating chuck, even in the horizontal position. Prevents chatter marks and extends tool life.

Combined Ball and Friction Bearing

Low load applications:

- Ball bearing for easy floating.
- High load applications:
- Friction bearing to withstand the high pressure.

Double Sealing Against Dirt

Prevents coolant and chips from entering the floating chuck.

Excellent Bore Quality

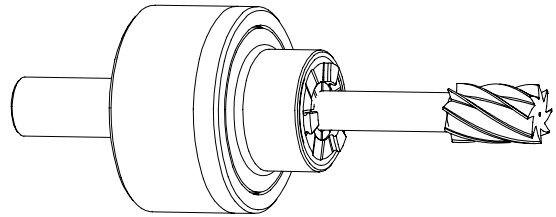
Only parallel floatation of tool possible.



Floating Chuck PH/ER Standard

Applications

REGO-FIX® floating chucks are excellent tools for reaming and tapping. Their design is such that the tool is self-centering in the vertical and horizontal position. The float is always parallel to the rotational axis and the rotation is both clockwise and counter clockwise. The self-centering feature allows very precise positioning of the reaming or tapping tool. This is especially important in horizontal applications, where on ordinary floating chucks the weight of the tool tends to dislocate the tool from the rotational axis. REGO-FIX® floating chucks are a very universal and economical solution to your reaming and tapping applications.



Floating Chuck PHC/ER

For Coolant Through Tools

REGO-FIX® Floating Chucks PHC/ER for coolant through tools are especially designed for internal cooling and have the same advantages as the PH/ER Floating Chucks.

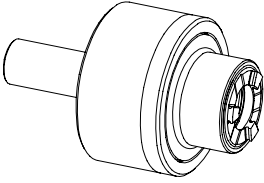
Floating Chuck MPH/ER

For Tight Space Applications

REGO-FIX® MPH/ER floating chucks are an efficient solution for tight space applications.



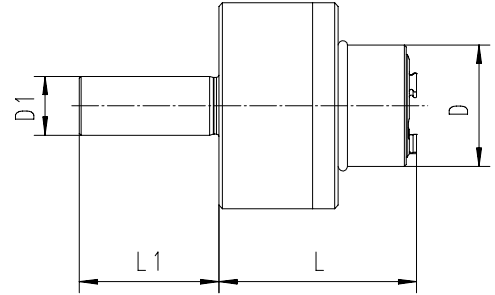
When using coolant through tools please order AXC clamping nuts and the appropriate sealing disks.

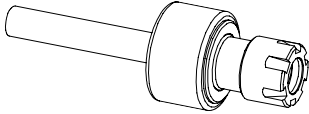


Floating Chucks For Non Coolant Through Tools

Type	Part No.	D [mm]	D1 h6	D2 [mm]	G float [mm]	L [mm]	L1 [mm]	Wrenches
Inch Diameter								
PH 5/8" / ER 11	2616.91102	22	5/8"	38	0.8	36	34	7117.11000
PH 3/4" / ER 11	2619.91102	22	3/4"	38	0.8	36	34	7117.11000
Metric Diameter								
PH 16 / ER 11	2616.91100	22	16	38	0.8	36	34	7117.11000
PH 20 / ER 11	2620.91100	22	20	38	0.8	36	34	7117.11000
PH 22 / ER 11	2622.91100	22	22	38	0.8	36	34	7117.11000

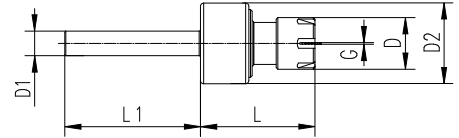
Supplied with: Floating holder, clamping nut and spanner.



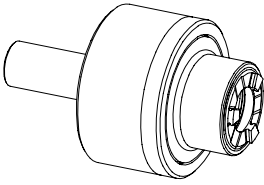


**Mini-Floating Chucks
For Non Coolant Through Tools**

Type	Part No.	D [mm]	D1 h6	D2 [mm]	G float [mm]	L [mm]	L1 [mm]	Wrenches
Inch Diameter								
MPH 3/4" / ER 11 M	2619.91108	16	3/4"	25	0.5	35	70	7113.11000
MPH 1" / ER 11 M	2625.91108	16	1"	25	0.5	35	40	7113.11000
Metric Diameter								
MPH 8 / ER 11 M	2608.91107	16	8	25	0.5	35	42	7113.11000
MPH 10 / ER 11 M	2610.91107	16	10	25	0.5	35	42	7113.11000
MPH 16 / ER 11 M	2616.91107	16	16	25	0.5	35	42	7113.11000
MPH 20 / ER 11 M	2620.91107	16	20	25	0.5	35	42	7113.11000
MPH 22 / ER 11 M	2622.91107	16	22	25	0.5	35	42	7113.11000
MPH 25 / ER 11 M	2625.91107	16	25	25	0.5	35	40	7113.11000



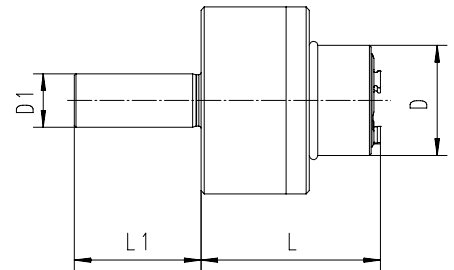
Supplied with: Floating holder, clamping nut, spanner.



Floating Chucks For Coolant Through Tools

Type	Part No.	D [mm]	D1 h6	D2 [mm]	G float [mm]	L [mm]	L1 [mm]	Wrenches
Inch Diameter								
PHC 5/8" / ER 20	2616.92004	33	5/8"	56	1.0	53.5	38	7117.20000
PHC 3/4" / ER 20	2619.92004	33	3/4"	56	1.0	53.5	38	7117.20000
PHC 1" / ER 20	2625.92004	33	1"	56	1.5	53.5	38	7117.20000
PHC 3/4" / ER 32	2619.93204	46	3/4"	70	1.5	64.5	46	7117.32000
PHC 1" / ER 32	2625.93204	46	1"	70	1.5	64.5	46	7117.32000
PHC 1 1/4" / ER 32	2632.93204	46	1 1/4"	70	1.5	64.5	46	7117.32000
PHC 1 3/4" / ER 32	2644.93204	46	1 3/4"	70	1.5	64.5	46	7117.32000
Metric Diameter								
PHC 16 / ER 20	2616.92003	33	16.00	56	1.0	53.5	38	7117.20000
PHC 20 / ER 20	2620.92003	33	20.00	56	1.0	53.5	38	7117.20000
PHC 22 / ER 20	2622.92003	33	22.00	56	1.0	53.5	38	7117.20000
PHC 25 / ER 20	2625.92003	33	25.00	56	1.0	53.5	38	7117.20000
PHC 20 / ER 32	2620.93203	46	20.00	70	1.5	64.5	46	7117.32000
PHC 22 / ER 32	2622.93203	46	22.00	70	1.5	64.5	46	7117.32000
PHC 25 / ER 32	2625.93203	46	25.00	70	1.5	64.5	46	7117.32000
PHC 32 / ER 32	2632.93203	46	32.00	70	1.5	64.5	46	7117.32000

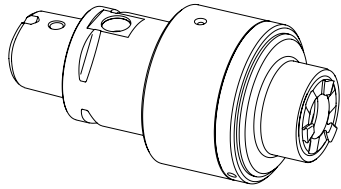
Supplied with: Floating holder, clamping nut, spanner and adjusting key.



When ordering please specify if a coolant nut is required. One will be substituted free of charge.



When using coolant through tools please order AXC clamping nuts and the appropriate sealing disks or Metallic Sealed Collets.



PHC | ER REGO-FIX CAPTO

Floating Chucks For Coolant Through Tools and with REGO-FIX CAPTO Interface

Type	Part No.	D [mm]	D2 [mm]	G float [mm]	L [mm]	L1 [mm]	Wrench
PHC-C3 / ER 20	2803.92003	33	56	0.8	91	53.5	7117.20000
PHC-C4 / ER 20	2804.92003	33	56	0.8	91	56.5	7117.20000
PHC-C4 / ER 32	2804.93203	46	70	0.8	100	64.0	7117.32000

Supplied with: Floating holder, clamping nut, spanner.

